

TCFD Product Disclosure 2024

Janus Henderson Global Sustainable Equity Fund

Approach to Climate Change and ESG

Janus Henderson is committed to responsibility – both in our own Corporate Responsibility policies and practices and in Responsible Investing. We believe that ESG considerations, including climate change factors, can have a material impact on the financial outcomes of our investments; these financially material considerations are vital to long-term risk-adjusted returns.

Our firmwide ESG Investment Principles are based on four key beliefs:

- Investment portfolios are built to maximise long-term risk-adjusted returns for our clients.
- Evaluation of financially material sustainability, climate, and ESG factors is a fundamental component of the investment processes for most of our actively managed strategies.
- Engagement is vital to understanding and promoting practices that position the issuers we invest in for the future.
- Investment teams should have the freedom to interpret and implement sustainability factors in the way best suited to their asset class and strategy objective, as they do for any fundamental investment factor.

At Janus Henderson, we strive to equip our investment teams—analysts and portfolio managers—to manage financially material climate and ESG risks and opportunities within our portfolios. This includes providing training and a combination of third-party data and proprietary insights to enable our investment teams to assess risk at a security and portfolio level and evaluate the impact on the financial outcomes of each portfolio. This process is a journey on which we have made significant strides in recent years, yet we have identified ways in which we can continue to make progress. We have tangible initiatives underway to enhance the data, analytics, and skills of our investment teams.

We believe that active research and engagement, the foundation of Janus Henderson's investment processes, is the optimal way to identify and manage financially material climate and ESG risks and opportunities. The use of ESG and climate data—such as carbon emissions and Climate Value at Risk—is still in its infancy. Much of the data and third-party analytics are estimated and backward-looking, while availability across asset classes and issuers is often incomplete, therefore any conclusion drawn, solely on numbers, can be misleading and requires interpretation and judgment. Our investment teams, who understand their portfolio holdings extremely well, and in partnership with the ESG subject matter experts on our central Responsibility Team, are best positioned to provide distinctive, actionable insight.

Climate Change and ESG data, Metrics and Analytics

Janus Henderson has, and will continue, to improve the range of data, metrics, and analytics available to our investment teams.

ESG Data

Investment teams have access to a range of third-party and proprietary data. These data include ESG ratings, risks and controversies, business-involvement, US Sustainable Development Goal-alignment, and other climate and ESG related data sets.

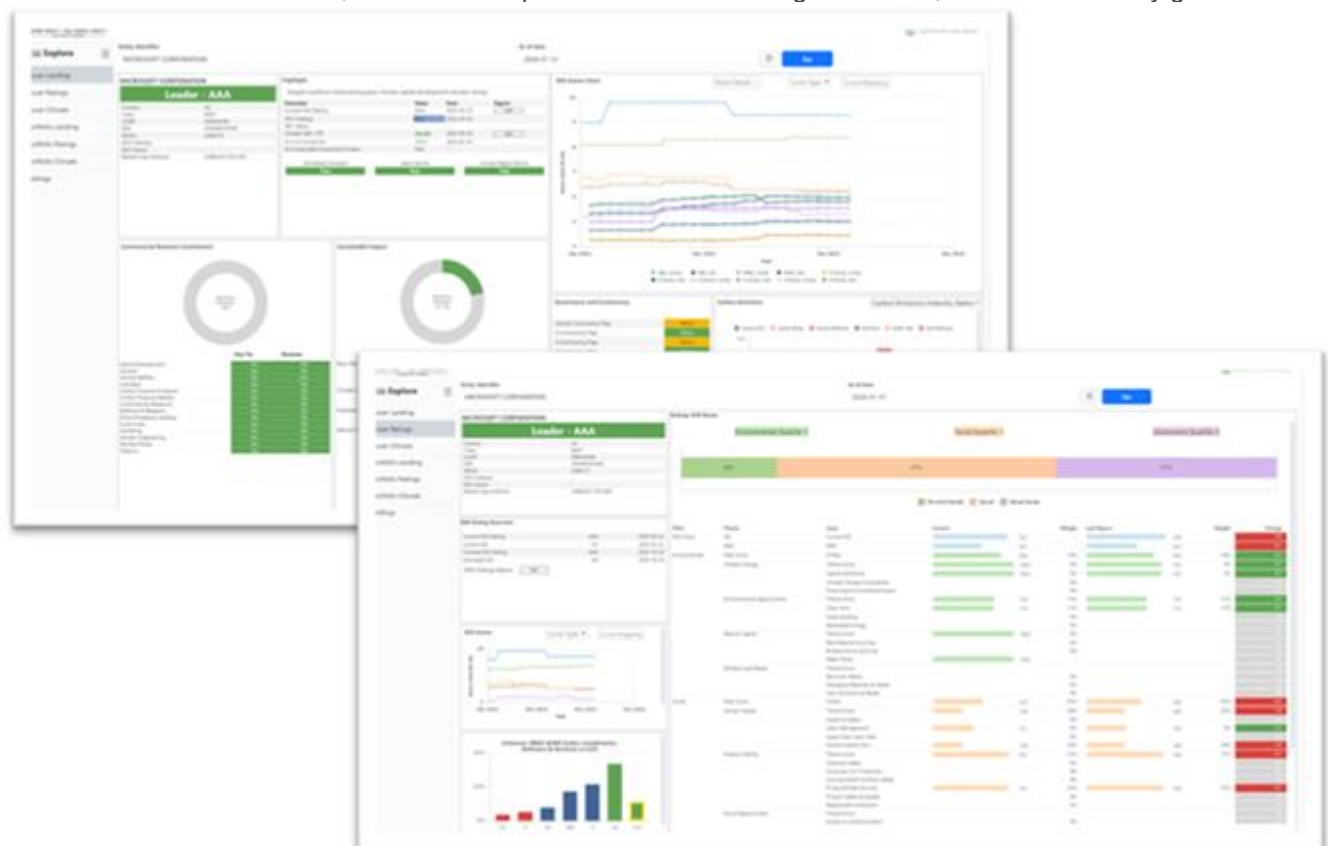
Carbon and Climate Data

Our investment teams have access to a wide range of third-party climate data that is available, as appropriate, at both an issuer and portfolio level. We continue to conduct comprehensive education, training, and embedding of climate metrics and scenario analysis in the investment process. These data include:

- Carbon metrics
- Climate scenario analysis, using a range of scenarios and assessed in detailed with respect to physical and transition risks
- Implied Temperature Rise
- Stranded asset risk, green revenues and low carbon transition opportunities

Proprietary ESG and Climate Dashboard

In 2024, we launched our firmwide proprietary ESG data and analysis tool, ESG Explore (ESGX). ESGX includes portfolio- and issuer-level landing, ratings, and climate pages. These portfolio and issuer climate pages show various climate-related metrics, including those identified as best practice by the Task Force on Climate-related Financial Disclosures, the Partnership for Carbon Accounting Financials, and other industry guidance.



Identification, Analysis, Management of Financially Material Climate and ESG Risks and Opportunities

We believe that our investment teams are best positioned to research, analyze, and determine the impact of financially material climate and ESG risks and opportunities on both issuers and portfolios.

Integration of climate and ESG considerations needs to align with our investment processes. Our investment teams are primarily responsible for the research, financial modelling, portfolio construction and stewardship activities. Having investment teams lead the integration process for climate and ESG risks and opportunities helps ensure that there is integration at each appropriate stage of the investment process, including portfolio decisions. Our investment teams are supported by our central Responsibility Team, who are subject matter experts in ESG. This team manages ESG data and training, and partners with the investment teams on research and engagement. This partnership leads to enhanced research and decision-making—marrying the sector and industry expertise of the investment teams with the ESG skills of the Responsibility Team.

This process is a combination of bottom-up analysis, starting at the issuer level and is increasingly leveraging portfolio-level data for an incremental lens and layer of oversight. For bottom-up analysis, our investment teams have access to the issuer-level and portfolio-level third-party data described previously. They leverage these data to identify potentially financially material climate and ESG risks and opportunities as they research their issuers. They may consider and utilize third-party financial materiality frameworks in conjunction with their own knowledge, to focus on the issues likely to be most material.

The geographical domicile of the issuer or its assets can also impact materiality. The investment teams potentially conduct engagements to both obtain further insight on the climate or ESG issue, often to encourage the issuer to better manage these risks and opportunities to best-position the issuer for future success. As part of the research process, investment teams assess the materiality and the impact on relevant financial metrics for the issuer, which could include cash flows, valuation, cost of capital, or credit ratings. This research and insight flow into the investment decision, similar to how an investment team would consider any financially material factor. Should a material unmanaged risk be identified and quantified, we evaluate the impact on a security's price and risk-adjusted return. Should we believe the risk is not fully priced in, the portfolio impact could include escalation through further engagement, re-weighting of position sizes, changing target prices, or divestment for outsized unmanaged risks.

Increasingly, we are marrying portfolio-level analysis with the bottom-up process to identify, analyze and manage financially material climate and ESG risks. ESGX enables investment teams to quickly identify any material climate or ESG risks at the portfolio level, then drill down to issuer to better understand the source of those risks.

Engagement vs. Exclusion or Divestment

We prefer an engagement-focused approach to a firm-level exclusion or divestment policy, both in sectors with higher environmental risk and for issuers where we have identified financially material climate or ESG risks.

We believe this approach is best for maximising risk-adjusted returns for our clients and for driving positive change at our portfolio issuers. Most products and services offered by an issuer play necessary roles for the global economy, including sectors with higher carbon emissions such as energy, industrials, materials, and utilities. We research and engage with these issuers to improve client outcomes. First, we can engage for information; the knowledge we gain through our engagements with issuers can be leveraged in the investment process to better inform our research, modelling, and investment decisions. Engaging for information helps us assess the magnitude of any potential risk, how well an issuer is managing that risk, and the potential impact on that issuer's financial outcomes. Second, we can engage for action. Where we believe an issuer is ignoring or not adequately managing a financially material climate or ESG risk, we can engage for action—to encourage that issuer to adopt policies or practices that will address that risk and better position it for the future. This includes asking for issuers to enhance their disclosure of material ESG or climate data, such as carbon emissions. Our discussions with the issuer's management or board of directors directly link the climate or ESG consideration to why we believe addressing it makes them a better issuer, which may lead to improved cash flows, valuations, cost of capital, or credit ratings. Our investment issuer regularly partner with our central Responsibility Team on engagements. The professionals on our Responsibility Team are both engagement and ESG subject matter experts, that can assist in identifying and researching the engagement topics and facilitating the engagements themselves.

Carbon Intensive Equity Sectors

Energy

This sector includes issuers in oil and gas drilling equipment and services, exploration and production, refining and marketing, storage and transportation, integrated oil and gas, and coal and consumable fuels. Under orderly and disorderly scenarios, there will be a quicker phase out of oil use, posing headwinds to this sector. However recent energy security concerns demonstrate the need for new, alternative energy solutions, which will benefit issuers that develop new, low-carbon technologies. These issuers will also have to consider how to phase out assets at risk of being stranded.

Industrials

This sector includes capital goods (including aerospace and defence, building products, construction and engineering, electrical equipment, industrial conglomerates, machinery, and trading issuers and distributors), commercial and professional services, and transportation (including air freight and logistics, airlines, marine, road and rail, and transportation infrastructure). Some of these issuers might face headwinds associated with transition risks related to policies that try to shift the world to a lower carbon economy, especially under the orderly and disorderly transition scenarios. However, some of these issuers might face tailwinds associated with technology opportunities if they can innovate, for example, with the development of sustainable fuels. Many of these issuers face significant physical risks, as assets may be negatively affected by climate-related weather events.

Materials

This sector includes issuers in chemicals (including commodity chemicals, diversified chemicals, fertilizers and agricultural chemicals, industrial gases, and specialty chemicals), construction materials, containers and packaging (including metal and glass containers, and paper packaging), metals and mining (including aluminium, diversified metals and mining, copper, gold, precious metals and minerals, silver, and steel) and paper and forest products. Demand for these issuers is expected to increase amid a low-carbon transition, as many of their raw products are used in renewable energy technologies. However, a key transition risk will be considering the conditions for people living and working near mines and operations. Also, some facilities may face physical risks associated with operating in high water stress areas.

Utilities

This sector includes electric utilities, gas utilities, multi-utilities, water utilities, an independent power and renewable electricity producers. The electrification of global energy systems is imperative to the climate transition. Renewable or green energy sources could benefit from investment flows being directed towards the sector to help achieve net zero targets. These issuers could face increased demand as other sectors decarbonise. However, these issuers could also face challenges associated with physical risks, like water scarcity impacting hydro-electric plants.

This product has the following exposures to high carbon intensive sectors:

| Equity Sectors | Product Exposure (%) |
|----------------|----------------------|
| Industrials | 20.95% |
| Utilities | 4.46% |
| Materials | 1.67% |
| | 27.08% |

Note that this product may have product-level exclusions. Please refer to the documentation on the product website for more details.

Governance and Oversight

We continue to strengthen the governance and oversight of climate and ESG risks.

Our investment teams are at the core of our governance process and bear the primary responsibility for identifying, analyzing, and integrating financially material ESG and climate considerations. In addition, we have established independent oversight mechanisms.

Our ESG Oversight Committee, chaired by our Chief Responsibility Officer, provides effective oversight over ESG investment processes including portfolio design, portfolio management, various ESG data and toolsets, risk and compliance activities, as well as non-investments oversight over ESG processes including reporting and ESG disclosure. Other independent functions provide oversight for their respective areas of governance, and escalate any concerns to the ESG Oversight Committee, which can, in turn, escalate concerns to the Janus Henderson Executive Committee (ExCo):

- Front office controls and governance: ongoing assurance that alignment with documented sustainability commitments can be evidenced where automated controls and/or third-party data are not available
- Compliance: portfolio- and issuer-level monitoring of implementation of ESG and climate commitments
- Financial risk team: portfolio-level oversight and climate and ESG risks

Lastly, the Janus Henderson Group Board of Directors provides top-level oversight of climate and ESG risks. Our Chief Responsibility Officer provides quarterly updates to the Governance and Nominations Committee on both operational and investment issues. More details on our approach to the governance and oversight of climate and ESG risks can be found in our firmwide TCFD report.

Portfolio Climate Metrics

Below are the carbon metrics for this product used to assess climate related risks and opportunities.

The combination of these metrics provides a multi-dimensional view of the product's climate risk exposures and provide useful insights about the product holdings when assessing climate risks and opportunities.

It is important to note that climate risk considerations are part of the wider investment decision making about the attractiveness of an investment and will not explicitly supersede other inputs in security selection unless explicit climate risk management is an objective of the mandate.

Note that all climate-related data are sourced from MSCI. Coverage may differ by asset class and is provided as far as reasonably practicable. Datapoints with coverage of less than 60-70% may be less informative for understanding product risks and opportunities. The period of the data reflects the disclosure of metrics after the first year of producing a TCFD report.

| | | | Portfolio | Coverage | Benchmark | Coverage |
|---|----------------------|---------------------------|------------|----------|------------|----------|
| Allocation base | EVIC | Unit | 2023 | 2023 | 2023 | 2023 |
| Carbon Emissions | | | | | | |
| Total Carbon Emissions | Scope 1 & 2 | Tons CO2e | 36,732.64 | 97.77 | 100,429.95 | 99.80 |
| Total Carbon Emissions | Scope 3 - upstream | Tons CO2e | 216,382.29 | 97.77 | 222,006.07 | 99.69 |
| Total Carbon Emissions | Scope 3 - downstream | Tons CO2e | 146,417.44 | 97.77 | 543,708.90 | 99.69 |
| Carbon Footprint | | | | | | |
| Total Carbon Footprint | Scope 1 & 2 | Tons CO2e/\$M invested | 15.44 | 97.77 | 42.20 | 99.80 |
| Total Carbon Footprint | Scope 3 - upstream | Tons CO2e/\$M invested | 90.92 | 97.77 | 93.29 | 99.69 |
| Total Carbon Footprint | Scope 3 - downstream | Tons CO2e/\$M invested | 61.52 | 97.77 | 228.47 | 99.69 |
| Weighted Average Carbon Intensity (WACI) | | | | | | |
| WACI Corporate Constituents | Scope 1 & 2 | Tons CO2e/\$M revenue | 38.08 | 97.77 | 105.59 | 99.92 |
| WACI Corporate Constituents | Scope 3 - upstream | Tons CO2e/\$M revenue | 269.92 | 97.77 | 251.39 | 99.69 |
| WACI Corporate Constituents | Scope 3 - downstream | Tons CO2e/\$M revenue | 169.65 | 97.77 | 452.78 | 99.69 |
| WACI Sovereign Constituents | GHG Intensity | Tons CO2e/\$M GDP nominal | na | 0 | na | 0 |
| Portfolio Temperature Rise | | | | | | |
| Implied Temperature Rise | | Degrees Celsius | 1.90 | 97.77 | 2.30 | 99.62 |

Source: MSCI

Benchmark: MSCI World Index

* Equity portfolios and benchmarks might have minimal exposure to sovereigns through holdings of certain instruments, including treasury notes, sovereign debt, or indices with exposure to sovereigns.

At year-end, our portfolio had a lower carbon footprint than the benchmark, meaning it had fewer financed emissions than the benchmark. The portfolio's Scope 1 + 2 carbon footprint was largely driven by its underweight exposure to the carbon intensive sectors, such as energy and materials. The lowest Scope 1 + 2 carbon contributors in the portfolio were the software company Autodesk, the capital markets company S&P Global and the industrial real estate investment trust Prologis. The highest Scope 1 + 2 carbon contributors in the portfolio were the containers and packaging company DS Smith, the electric utilities company SSE and the electrical equipment company Prysmian. However, the highest contributors do still fall under the portfolio's low carbon approach as DS Smith is a leading provider and recycler of sustainable corrugated packaging products in Europe; SSE is a leader within the clean energy space in the UK; and a large part of Prysmian's revenues are derived from low carbon-enabling products.

Scope 3 emissions data associated with the upstream and downstream value chains of portfolio holdings are sometimes less reliable than Scope 1 + 2 data, due to the challenges of collecting such data across the value chain. Therefore, we focus more closely on Scope 1 + 2 emissions.

The Scope 1 + 2 weighted average carbon intensity (WACI) of the portfolio was lower than the benchmark, meaning the portfolio had less exposure to high carbon intensive issuers in terms of tCO₂e/\$M revenue. Similar to the lowest carbon contributors, the lowest WACI contributors in the portfolio were Autodesk and Prologis with the addition of the entertainment company Nintendo. SSE, DS Smith and Equinix were the highest WACI contributors in the portfolio. Although Equinix was one of the largest contributors, the company is aligned with the portfolio's low carbon approach by enabling its customers to move their computing operations to the cloud.

The implied temperature rise was lower than the benchmark, so if the portfolio represented the global economy, the world would be on track for a 1.90 degrees Celsius mean temperature rise by the end of the century from pre-industrial levels. The lower implied temperature results from our Sustainable Equity approach for the investment strategy, our explicitly low-carbon approach, and the exclusion of many carbon intensive industries and business practices.

Climate Scenario Analysis

Significant progress has been made on our journey to equipping our investment teams with the data and the capabilities to properly assess the accuracy and impact of the information contained in climate scenario analysis.

Climate scenario analysis helps us analyse at the portfolio and issuer level:

(a) transition risks and opportunities (policy risks resulting in the asset being impacted by societal and economic shifts towards a low-carbon future; and technological opportunities such as innovations in clean technology)

(b) physical risk, which is the impact on the asset of environmental events such as floods or storms.

Based on input from our ESG subject-matter experts in the central Responsibility team, we have selected three Network for Greening the Financial System (NGFS) transition risk scenarios and two physical risk scenarios (Average and Aggressive) to provide a forward-looking and return-based valuation assessment.

- i. **NGFS SCENARIO 1.5°C ORDERLY: Net Zero 2050** limits global warming to 1.5°C through stringent climate policies and innovation, reaching global net zero CO₂ emissions around 2050. Some jurisdictions such as the US, EU and Japan reach net zero for all GHGs.
- ii. **NGFS SCENARIO 1.5°C DISORDERLY:** Divergent Net Zero reaches net zero around 2050 but with higher costs due to divergent policies introduced across sectors leading to a quicker phase out of oil use.
- iii. **NGFS SCENARIO 3°C HOT HOUSE:** Current Policies assumes that only currently implemented policies are preserved, leading to high physical risks and failure to reach net zero.

Note that all climate-related data are sourced from MSCI. Coverage may differ by asset class and is provided as far as reasonably practicable. Datapoints with coverage of less than 60-70% may be less informative for understanding product risks and opportunities. The period of the data reflects the disclosure of metrics after the first year of producing a TCFD report.

| | Portfolio | Coverage | Benchmark | Coverage |
|--|-----------|----------|-----------|----------|
| Scenario: REMIND 1.5C Orderly Average | | | | |
| | 2023 | 2023 | 2023 | 2023 |
| Transition Climate VaR - Policy | -4.06 | 97.77 | -9.58 | 98.17 |
| Transition Climate VaR - Technology | 2.95 | 97.77 | 1.08 | 98.17 |
| Physical Climate VaR | -0.67 | 95.46 | -1.85 | 97.78 |
| Aggregated Climate VaR | -1.78 | 97.77 | -10.35 | 98.17 |
| Scenario: REMIND 1.5C Disorderly Aggressive | | | | |
| Transition Climate VaR - Policy | -5.30 | 97.77 | -13.27 | 98.17 |
| Transition Climate VaR - Technology | 5.47 | 97.77 | 1.98 | 98.17 |
| Physical Climate VaR | -1.09 | 95.46 | -2.73 | 97.78 |
| Aggregated Climate VaR | -0.92 | 97.77 | -14.03 | 98.17 |
| Scenario: REMIND 3.0C Hot House Aggressive | | | | |
| Transition Climate VaR - Policy | -0.43 | 97.77 | -2.26 | 98.17 |
| Transition Climate VaR - Technology | 0.66 | 97.77 | 0.22 | 98.17 |
| Physical Climate VaR | -1.92 | 95.46 | -5.08 | 97.78 |
| Aggregated Climate VaR | -1.68 | 97.77 | -7.11 | 98.17 |

Source: MSCI

Benchmark: MSCI World Index

The portfolio's aggregate Climate Value at Risk (CVaR) under the 1.5C Orderly Average scenario was lower than the benchmark, meaning it had less value at risk associated with policy risk, technology opportunities, and physical risks. The portfolio's aggregate CVaR was also lower than the benchmark under both of the 1.5C Disorderly Aggressive and 3.0C Hot House Aggressive scenarios, again showing the portfolio had less value at risk derived from policy risk, technology opportunities and physical risks. We perceive climate to be a financially material risk or opportunity to a company and we will research and potentially engage to both understand the impact of climate on cash flows or valuation and to possibly encourage the company to better address any risk that we believe is not being adequately managed. This approach has resulted in a carbon profile and risk lower than that of our benchmark.

Glossary and Abbreviations

CARBON FOOTPRINTING refers to the calculation of the total greenhouse gas emissions caused by an individual, event, organization, service, or product expressed as a carbon dioxide equivalent.

CLIMATE-RELATED OPPORTUNITY refers to the potential positive impacts related to climate change on an organization. Efforts to mitigate and adapt to climate change can produce opportunities for organizations, such as through resource efficiency and cost savings, the adoption and utilization of low-emission energy sources, the development of new products and services, and building resilience along the supply chain. Climate-related opportunities will vary depending on the region, market, and industry in which an organization operates.

CLIMATE-RELATED RISK refers to the potential negative impacts of climate change on an organization. Physical risks emanating from climate change can be event-driven (acute) such as increased severity of extreme weather events (e.g., cyclones, droughts, floods, and fires). They can also relate to longer-term shifts (chronic) in precipitation and temperature and increased variability in weather patterns (e.g., sea level rise). Climate-related risks can also be associated with the transition to a lower-carbon global economy, the most common of which relate to policy and legal actions, technology changes, market responses, and reputational considerations.

GOVERNANCE refers to "the system by which an organization is directed and controlled in the interests of shareholders and other stakeholders."

GREENHOUSE GAS (GHG) EMISSIONS SCOPE LEVELS

- Scope 1 refers to all direct GHG emissions.
- Scope 2 refers to indirect GHG emissions from consumption of purchased electricity, heat, or steam.
- Scope 3 refers to other indirect emissions not covered in Scope 2 that occur in the value chain of the reporting issuer, including both upstream and downstream emissions. Scope 3 emissions could include the extraction and production of purchased materials and fuels, transport-related activities in vehicles not owned or controlled by the reporting entity, electricity-related activities (e.g., transmission and distribution losses), outsourced activities, and waste disposal.

NGFS The Network for Greening the Financial System is a group of 91 central banks and supervisors and 14 observers committed to sharing best practices, contributing to the development of climate –and environment– related risk management in the financial sector and mobilising mainstream finance to support the transition toward a sustainable economy. NGFS have developed climate scenarios to provide a common starting point for analysing climate risks to the economy and financial system.

RISK MANAGEMENT refers to a set of processes that are carried out by an organization's board and management to support the achievement of the organization's objectives by addressing its risks and managing the combined potential impact of those risks.

SCENARIO ANALYSIS refers to a process for identifying and assessing a potential range of outcomes of future events under conditions of uncertainty. In the case of climate change, for example, scenarios allow an organization to explore and develop an understanding of how the physical and transition risks of climate change may impact its businesses, strategies, and financial performance over time. Each NGFS scenario used in this disclosure explores a different set of assumptions for how climate policy, emissions and temperatures evolve.

STRATEGY refers to an organization's desired future state. An organization's strategy establishes a foundation against which it can monitor and measure its progress in reaching that desired state. Strategy formulation generally involves establishing the purpose and scope of the organization's activities and the nature of its businesses, taking into account the risks and opportunities it faces and the environment in which it operates.

TRANSITION PLAN refers to an aspect of an organization's overall business strategy that lays out a set of targets and actions supporting its transition toward a low-carbon economy, including actions such as reducing its GHG emissions.

Abbreviations

CO2 Carbon dioxide

CO2e Carbon dioxide equivalent

WACI Weighted Average Carbon Intensity

SASB Sustainability Accounting Standards Board

TCFD Task Force on Climate-related Financial Disclosures

CVaR Climate Value at Risk

EVIC Enterprise Value Including Cash

GHG Greenhouse gas

Certain information contained herein (the "Information") is sourced from/copyright of MSCI Inc, MSCI ESG Research LLC, or their affiliates ("MSCI"), or information providers (together the "MSCI Parties") and may have been used to calculate scores, signals, or other indicators. The Information is for internal use only and may not be reproduced or disseminated in whole or part without prior written permission. The Information may not be used for, nor does it constitute, an offer to buy or sell, or a promotion or recommendation of, any security, financial instrument or product, trading strategy, or index, nor should it be taken as an indication or guarantee of any future performance. Some funds may be based on or linked to MSCI indexes, and MSCI may be compensated based on the fund's assets under management or other measures. MSCI has established an information barrier between index research and certain Information. None of the Information in and of itself can be used to determine which securities to buy or sell or when to buy or sell them. The Information is provided "as is" and the user assumes the entire risk of any use it may make or permit to be made of the Information. No MSCI Party warrants or guarantees the originality, accuracy and/or completeness of the Information and each expressly disclaims all express or implied warranties. No MSCI Party shall have any liability for any errors or omissions in connection with any Information herein, or any liability for any direct, indirect, special, punitive, consequential or any other damages (including lost profits) even if notified of the possibility of such damages.